

# Section 136: Data from a Northern Constabulary

4<sup>th</sup> May 2019  
Jayne Erlam

E·S·R·C  
ECONOMIC  
& SOCIAL  
RESEARCH  
COUNCIL

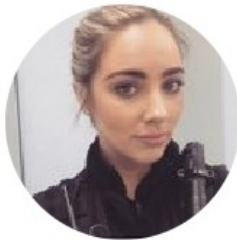
# S136 of Mental Health Act 1983

---

- Enables the removal from a public place of a person who appears **to the detaining officer** 'to be suffering from mental disorder and to be in immediate need of **care or control**...in the **interests of that person** or for the **protection of other persons**'
- The person is to be detained in a place of safety 'for a period not exceeding [24hrs] for the purpose of enabling them to be examined by a registered medical practitioner' and to be spoken to by an AMHP

# Why is this a problem

---



**PC Jessica Nye** @PcNye · 4d



Less than 3 hours into my night shift and there are currently 18 officers from a variety of departments up at the hospital dealing with 3 mental health jobs, 1 D&D and 1 prisoner escort! [#police](#) [@5317Pc](#)

# My Research

---

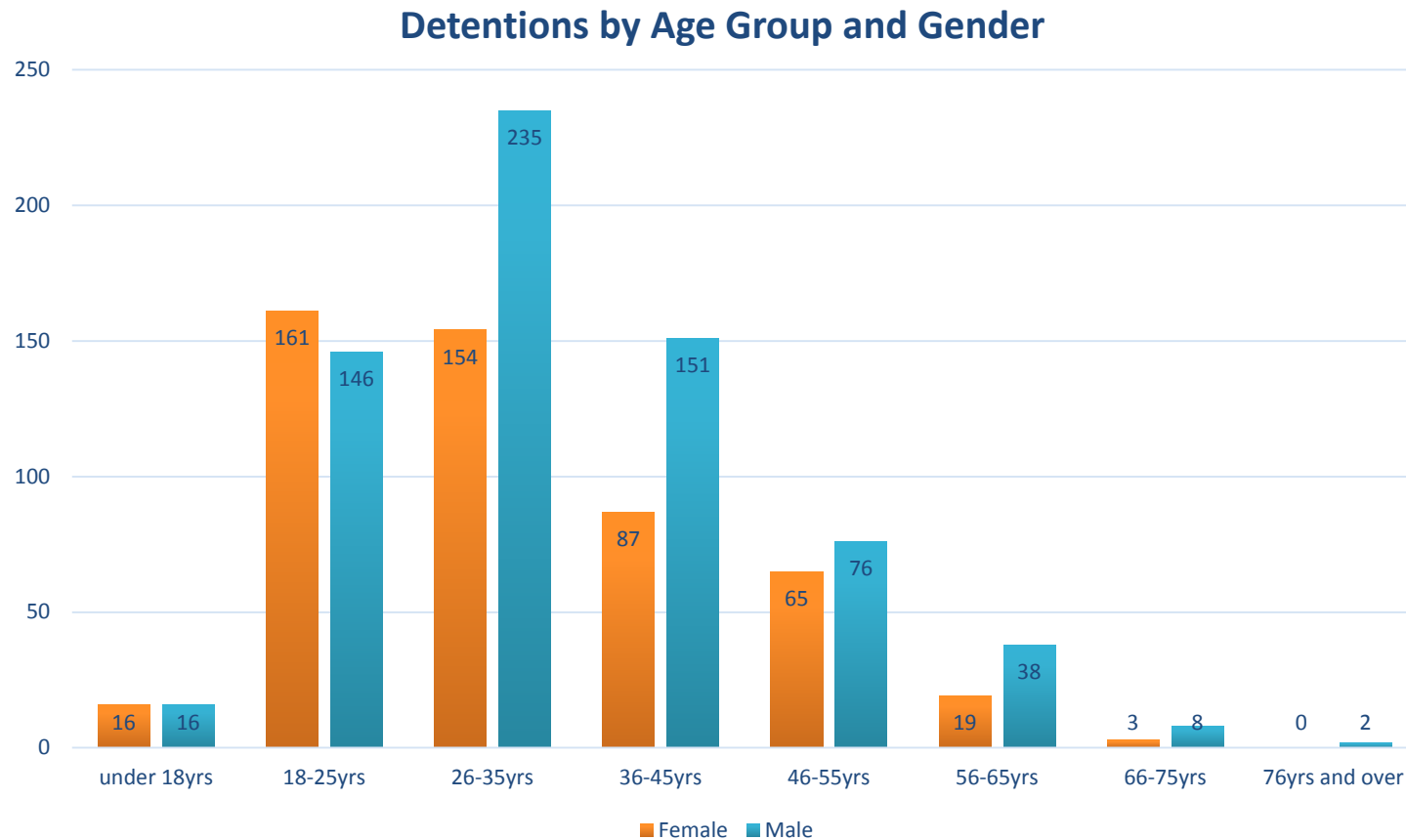
Mental health in austere times: The increasing role of police intervention in cases of mental distress in the UK

# The data

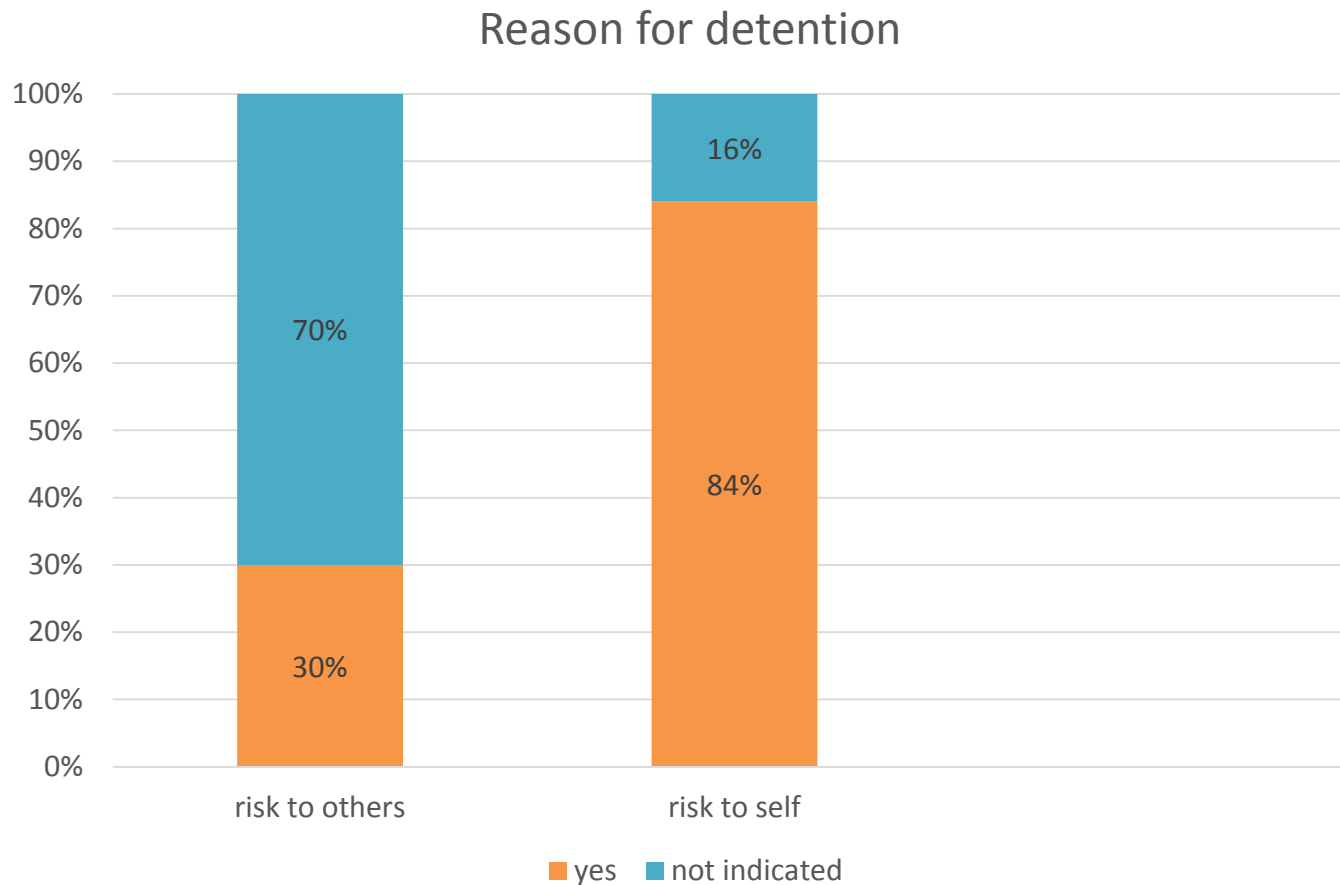
---

- Gathered by the mental health bed hub at the region's main mental health hospital
- 1247 entries between 10<sup>th</sup> Dec 2017 and 2<sup>nd</sup> Dec2018
- 63 were s135 detentions
- n= 1184 across 30 variables
- Data cleansing at police HQ
- Stata
- 149 variables
- Descriptive statistics

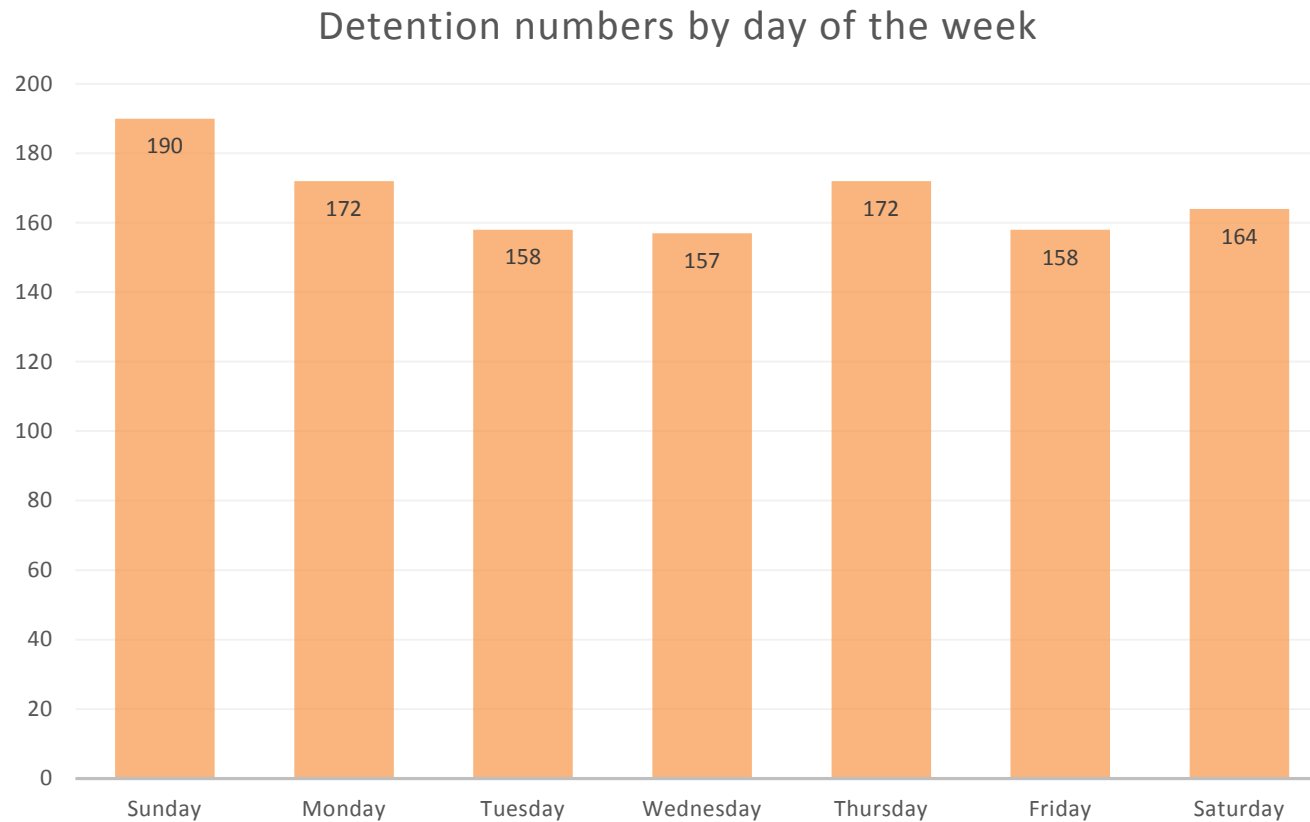
# Detentions by Age and Gender



# Reason for Detention



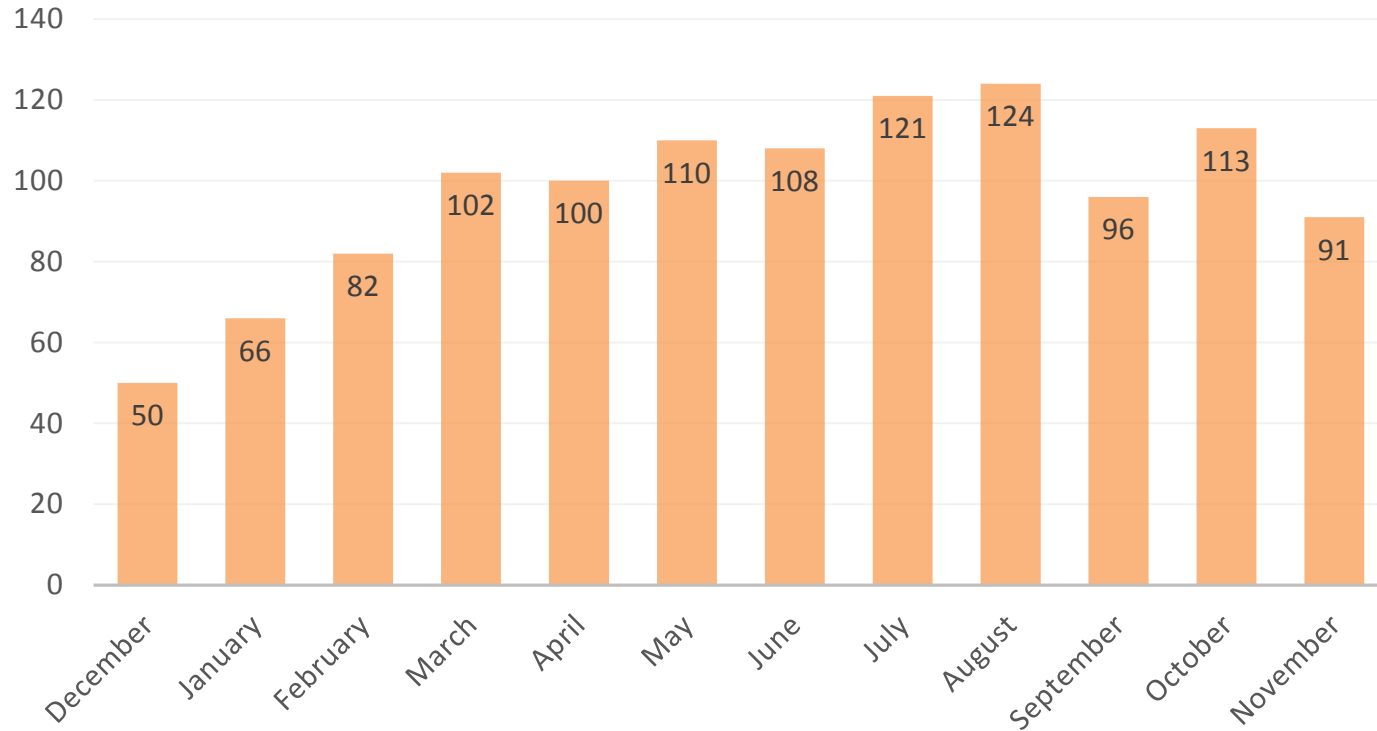
# Detentions per Day of the Week



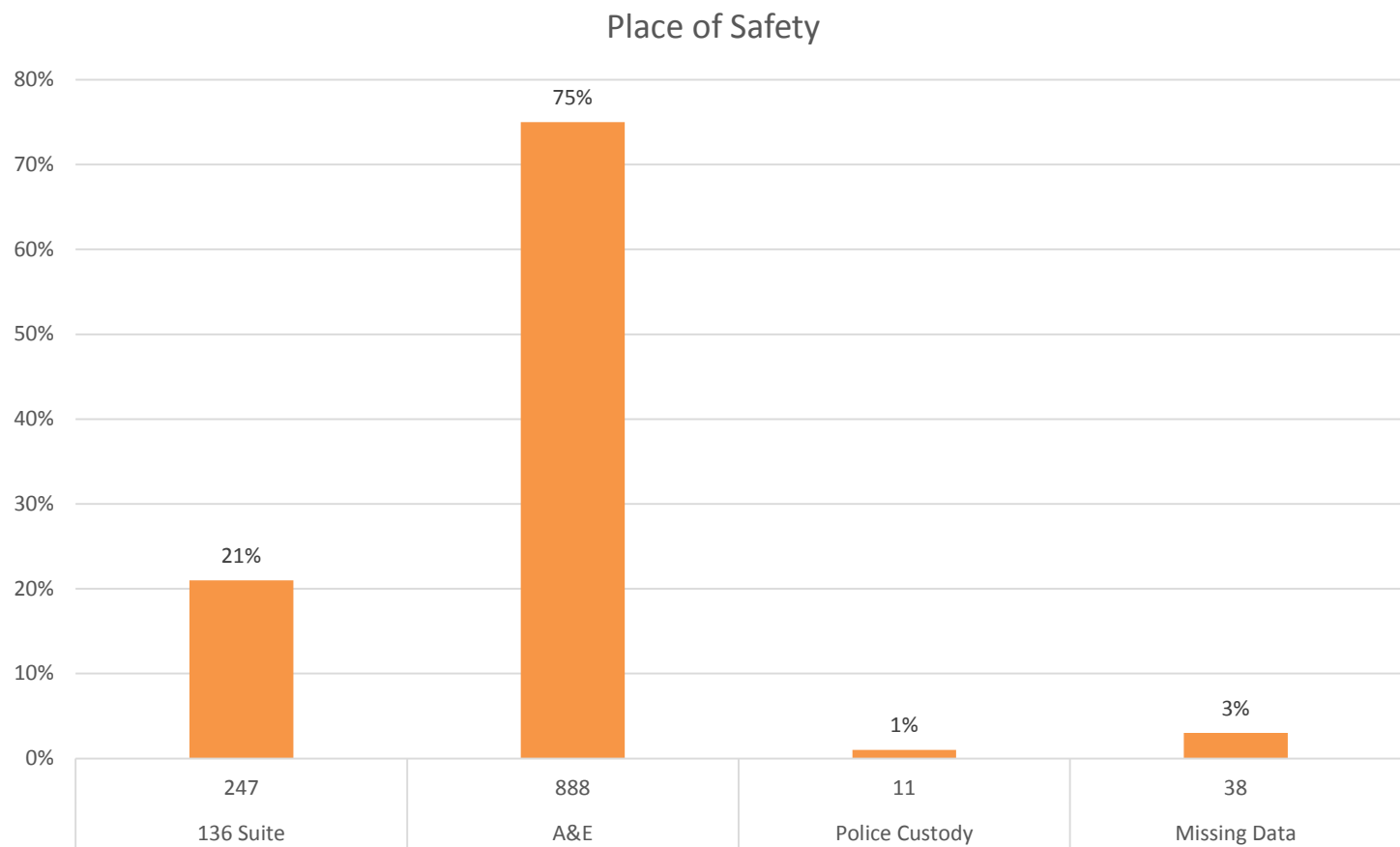


# Month of Detention

Detention numbers by month



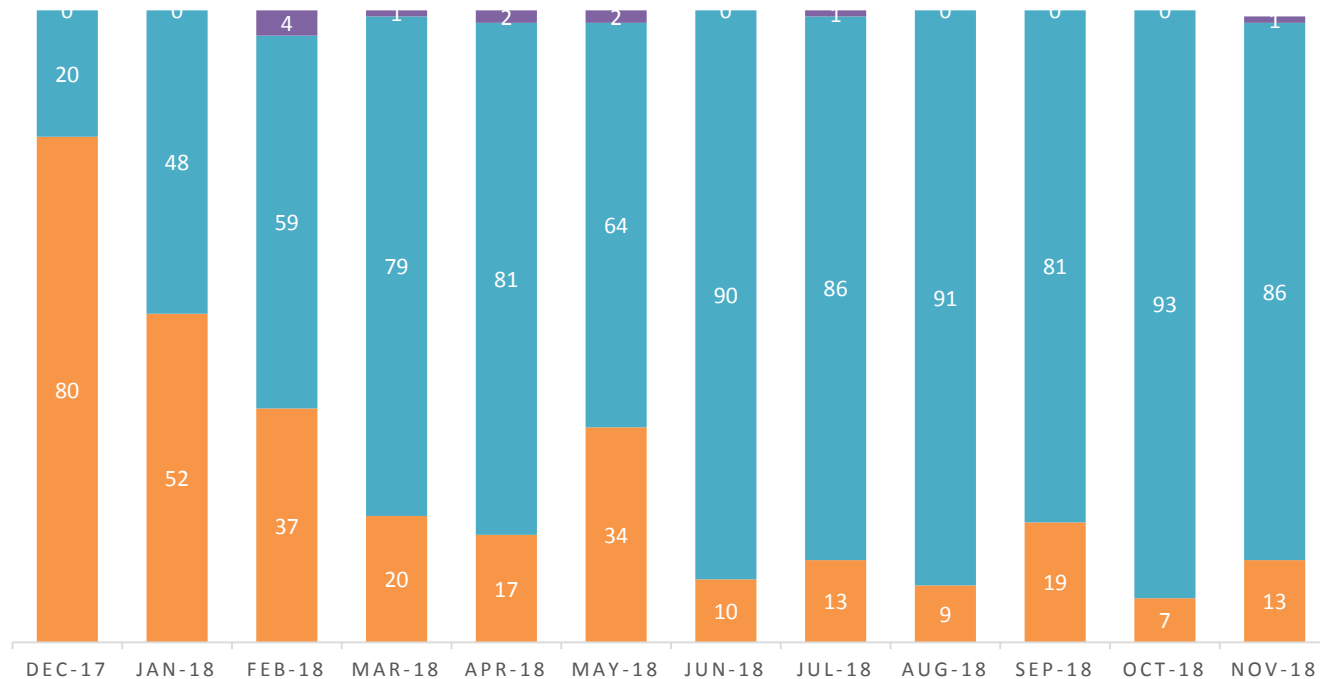
# Place of Safety



# Place of Safety by Percent

## POS BY PERCENT

136 Suite A&E Police Custody



# Police Frustration



**Peter Kirkham**

@Peter\_Kirkham

Policing today: NINE cops (about half the team) committed for most of a shift on three separate MH cases because NHS MH services (a) failed to properly deal with one case when "Crisis Team" (yeah, right...) were called earlier & (b) two separate MH facilities refused to accept>

22:46 · 29 May 19 · [Twitter for Android](#)



**Peter Kirkham** @Peter\_Kirkham · 4d

>the patients and told police to take them to A&E instead (whose staff had no means of dealing with them so police had to remain)...

Meanwhile ACTUAL policing went undone... This will NOT stop until supine police bosses take on NHS MH managers & shake them gently by the throat!>



# Summary

---

- There is an increase in people experiencing mental distress in public places
- The reliance on the police to meet the needs of people in mental distress is growing
- There are insufficient secure assessment suites available
- Officers are prevented from attending other incidences due to accompanying people awaiting assessments
- People are being detained in public spaces during their distress

# Any questions...

[j.erlam@lancaster.ac.uk](mailto:j.erlam@lancaster.ac.uk)



@JayneErlam