



South Yorkshire Violence Reduction Unit

Using data and community views in a public
health approach to preventing violence



What is a VRU?

- 18 Violence Reduction Units (VRUs) established in 2019
- New dedicated resource to prevent and reduce violence
- Annually Home Office funded
- South Yorkshire VRU based in Shepcote Police Station with a team of 10
- Use a public health approach, look at the causes of the causes of violence



Using Community views

- **Strategy:** Uniquely formed by going out to communities first
- **Community working Groups** established using Voluntary Action
- **Plan on a Page** Strategy following feedback
- **Grants:** engagement tool and find out what is needed in an area
- **Domestic Abuse work:** steering group to produce new animations
- **Preventing Violence Forum:** online meeting in Covid times
- **Relationships and Trust**



Framing and Insight

“It’s not just what you say that stirs people. It’s the way that you say it.”

William Bernbach

“You can have data without information, but you cannot have information without data.”

Daniel Keys Moran



Framing it right

“What on Earth is a Strategic Needs Assessment?”

South Yorkshire Residents (paraphrased)



My personal insight problem

Our work is here

I live here

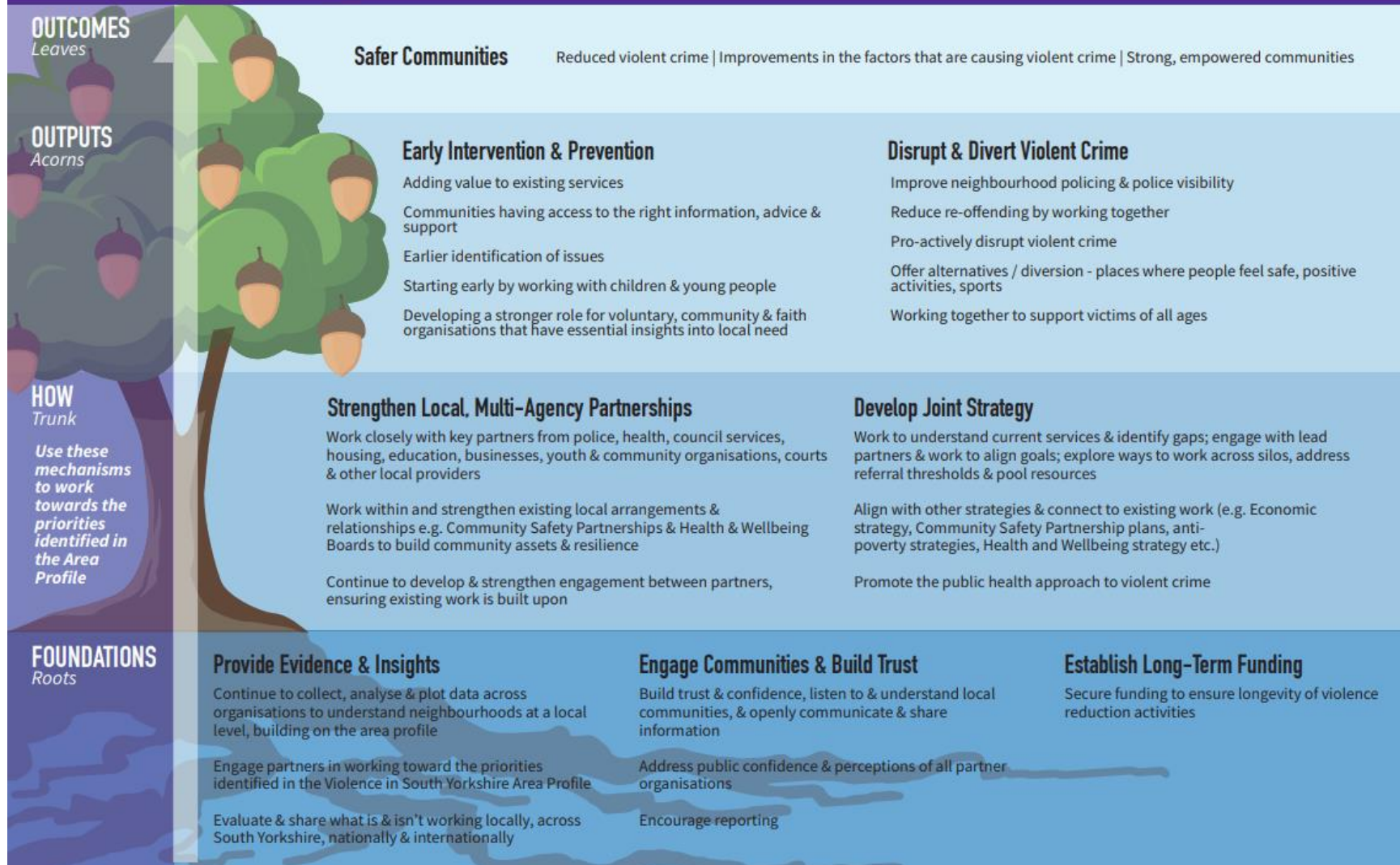
Most of my life here



Violence Reduction Strategy



South Yorkshire Violence Reduction Strategy



VRU **WHO WE'VE SUPPORTED SO FAR**

Click on the location or information points below to see more

Greenacre School
 Increasing independence & self-awareness of pupils with identified learning difficulties as an early intervention into aggressive behaviour

Springwell
 Coaching parents & children around the impact of aggressive & violent behaviour on children & the risks within the school & the community

EXODUS
 Growing aspirations of less advantaged children & young people by delivering activity clubs and camps

DONCASTER SAFEGUARDING CHILDREN PARTNERSHIP
 Working together to keep young people in Doncaster safe.

REACH UP.
 Youth support & maintenance based community outreach, focusing solely on uplifting young people & families

Naturewood Outdoor Activities
 Outdoor activities for children to promote healthy child development

Chaucer
 Using neuro-plasticity approaches to improve pupils' behaviour

UNITY GYM
 Gym committed to community development & health & wellbeing by improving access to fitness

Cathedral Archer Project
 Sheffield-based charity supporting homeless people

SF
 Running 'Assertive Outreach Project to help missing young people return home

M A A N
 Aims to work with communities & families through a regular program of activity to encourage resilience and reduce violent crime



Doncaster Council
 Reducing alcohol related violence rate through search mitt gloves to improve bodily searches

ABA
 Inclusive boxing academy working with young people to improve self esteem, health & fitness, & offering routes out of gang life & crime, into education/work

Edlington Community Organisation
 Offering activities for young people & families to improve employment levels & aspirations

The Light Project
 Working with Rotherham Muslim Community Forum to use the power of sport to engage young people at risk of

Mentoring Project
 Mentoring with excluded pupils to raise aspirations in work, education & training



Data and engagement

- **Plan B: Custody navigators**
- **Forging ahead: Employability**
- **A&E navigators: Teachable moments**
- **[Domestic Violence Campaign](#)**

Evidence based work



Posted on [August 11, 2018](#) by [Rik](#)

The sum, awarded to South Yorkshire Police from the Police Transformation Fund in 2017, is being used to fund a three-year programme of work which will help to transform ways of working across the police at a local, regional and national level.



Evidence based approaches to violence reduction

A discussion paper

Prevention continuum





Thank you for listening.

Any questions?